

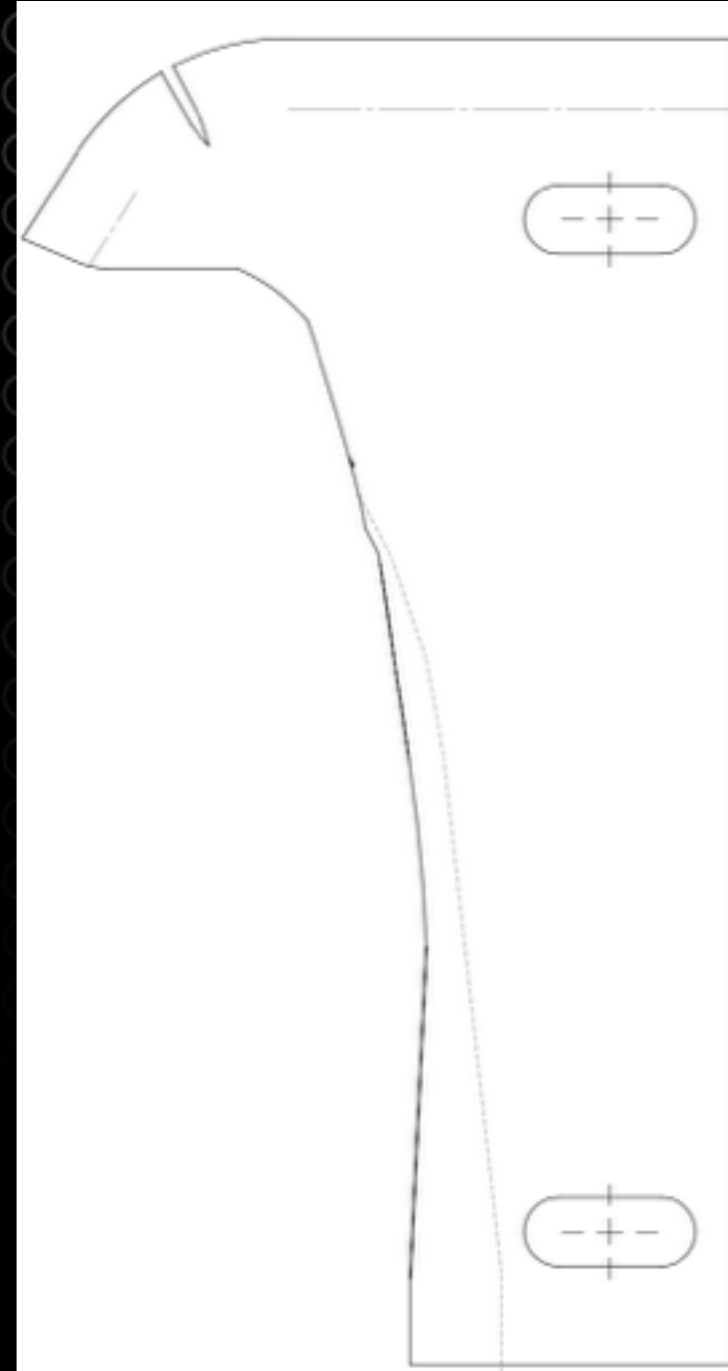


360 CHAINROLL
JD 40/90 SERIES
TRASH KNIFE REWORK GUIDE

STEP 1: PRINT PATTERN

Print out 40/90 trash knife modification pattern for 360 CHAINROLL at <https://360yieldcenter.com/360-yield-center-dealer-support/>. The same pattern can be used with both lefthand and righthand trash knives.

Important! Make sure your printer is not set to “Fit to page” -> Fitting the print to page will shrink the pattern and will not fit properly to the trash knife.



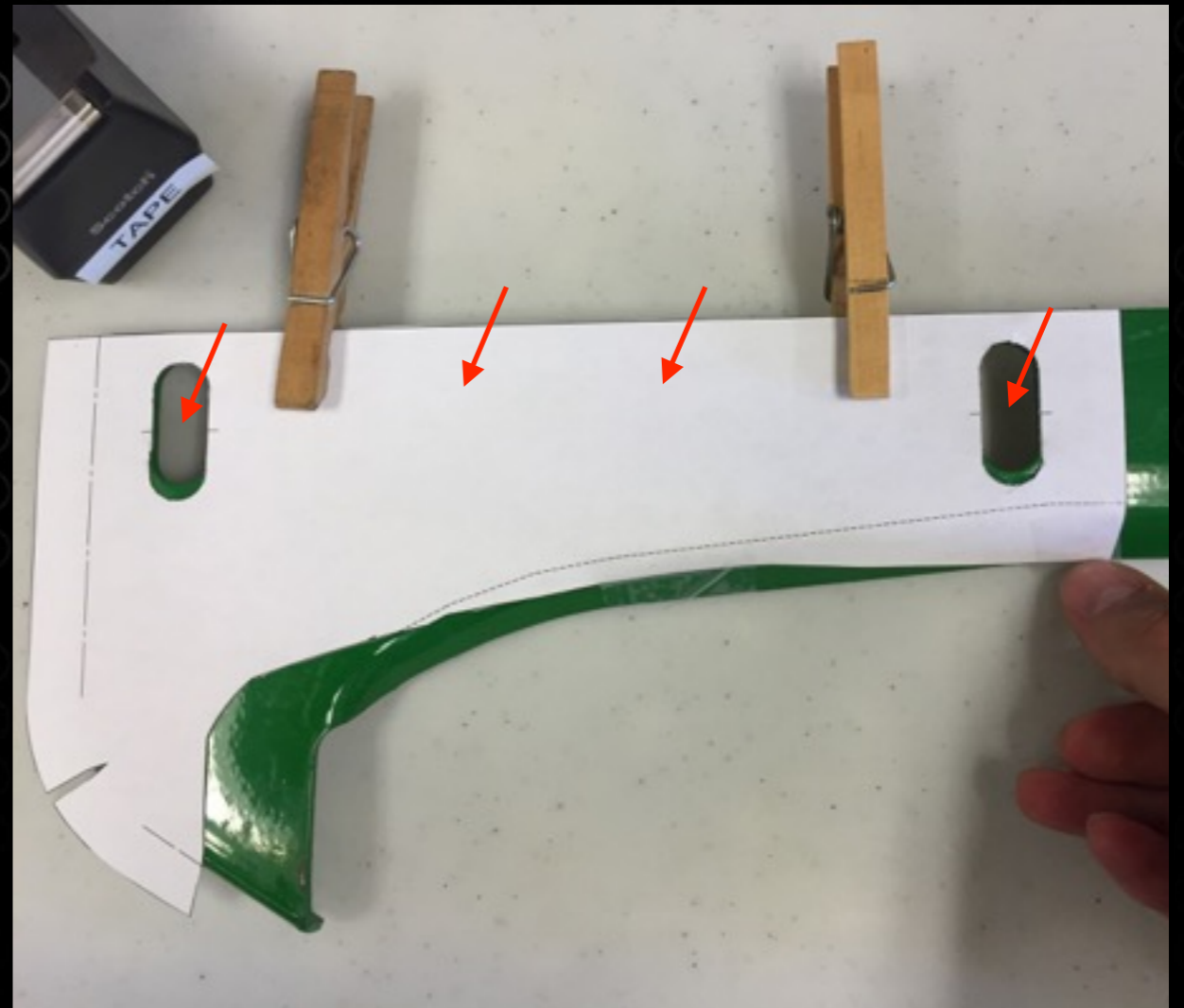
STEP 2: CUT PATTERN

Cut out pattern along solid lines. Be sure to cut out the slot holes.



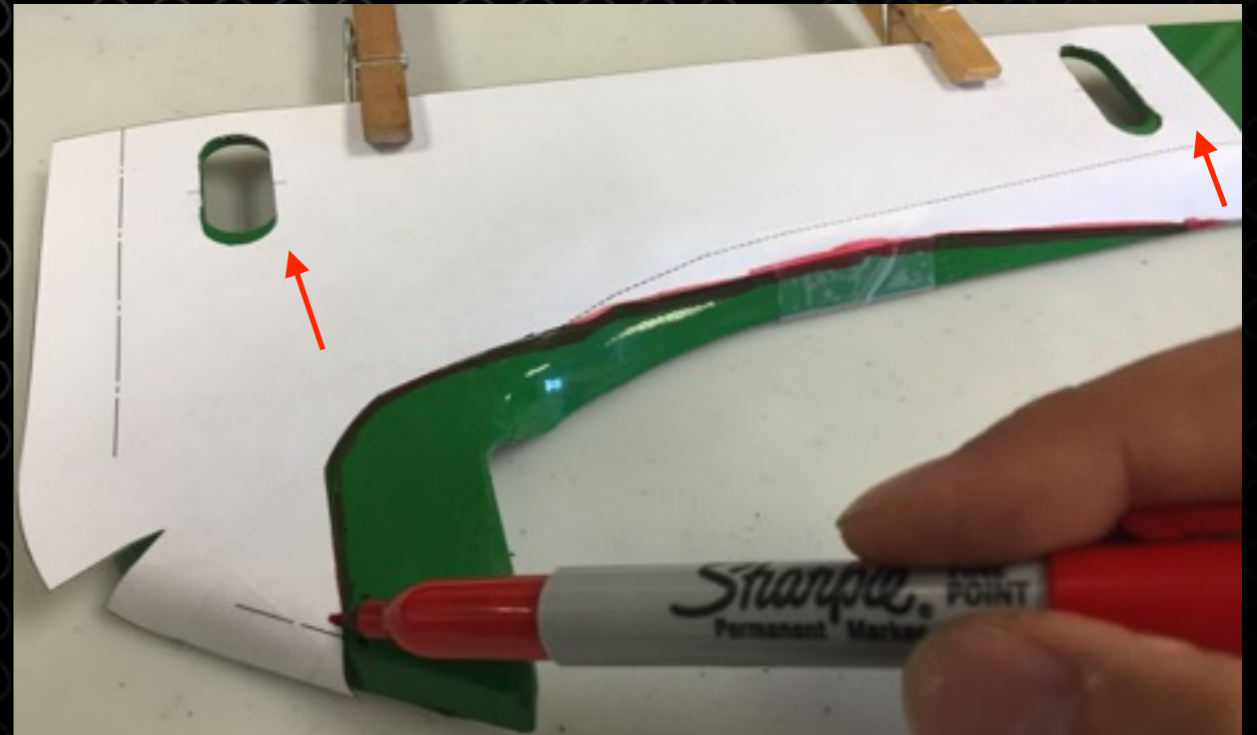
STEP 3: ALIGN PATTERN

Align pattern to 40/90 trash knife along back edge making sure slot holes line up at the rear. Use tape or safety pins to temporarily hold the pattern to the knife. *Note: Taping down the top part of the pattern is not necessary as there is no cutting done in this area.*



STEP 4: TRACE PATTERN

Trace out the slot holes as well as the inner curved edge profile. Remove pattern from trash knife.



STEP 5: REWORK KNIFE

Cut/grind out curved profile marked in Step 4. Lightly grind new profile smooth. Use a die grinder or similar to route out the slot holes.



STEP 6: VERIFY FIT-UP

Verify your modified trash knife fits with 360 CHAINROLL. If interferences still exist, mark these areas and grind out again.

